



## Supplemental Sailing Instructions



### ISORA Offshore Series 2026

#### Race 8 – Liverpool YC Midnight Race Weighted at 1.2

#### Liverpool - Douglas

Organised by the National YC, Liverpool YC and Douglas Bay YC

Date	Class	Start
Friday 5 <sup>th</sup> June 2026	All classes	15.00hrs
Same course for all classes		

This Supplementary Information MUST be read in conjunction with the MUSTO ISORA OFFSHORE SERIES 2026 Notice of Race and General Sailing Instructions and the [LYC Midnight race sailing instructions](#).

For details see ISORA website – [www.isora.org](http://www.isora.org) and LYC Website <https://www.lyc.org.uk/race-information>

On-Line Results by Sailwave





# MUSTO ISORA Offshore Race No 8 O3 - 2026

## Douglas - Laoghaire Offshore Race

### Supplemental Sailing Instructions

The responsibility for a boat's decision to participate in a race or to continue racing is hers alone. (RRS Fundamental Rule 3)

#### 1. Organisation.

- 1.1. The MUSTO ISORA Offshore Race No.9 is organised by the Liverpool YC, National Yacht Club and ISORA.
- 1.2. Enquiries, correspondence and entries should be sent to: - ISORA Chairman chair@ISORA.org

#### 2. Rules.

- 2.1. The Racing will be governed by the 'rules' as defined in *The Racing Rules of Sailing* (RRS) and the ISORA General Sailing Instructions 2026.
- 2.2. IRC rules part A, B & C shall apply to IRC racing.  
RRS part 2 rules will be replaced with the right-of-way rules of the International Regulations for Preventing Collisions at Sea (IRPCAS) between the times of local sunset and sunrise; or government right-of-way rules if applicable. A scoring penalty (RRS44.3) will be applicable during these times.
- 2.3. Crew numbers shall be limited to the maximum number specified on the IRC Certificate. IRC Rule 22 4.2
- 2.4. The requirements of Category 3+ Liferaft of the WORLD SAILING OFFSHORE SPECIAL REGULATIONS 2026-2027 apply to this event. Details of these are on the ISORA website.
- 2.5. In the event of conflict, this ISORA 2026 Supplemental Sailing Instructions (SSIs) will prevail. This changes RRS 63.7

#### 3. Entries, Registration & Eligibility

- 3.1. Competitors for the MUSTO ISORA Offshore Race must complete the entry form and pay the on-line race fee to ISORA – see the ISORA [web site](#)
- 3.2. A separate entry is required for the LYC Midnight Race. [See https://www.lyc.org.uk/race-information](https://www.lyc.org.uk/race-information)
- 3.3. The MUSTO ISORA Offshore Race will provide racing for the ISORA Classes; Zero, One and Two or as amended.
- 3.4. Class Flags will be flown from the backstay of each competing yacht.
- 3.5. Yachts shall belong to or be chartered to and be under the control of a member of a yacht club affiliated to the IS or RYA or other equivalent national authority.
- 3.6. Competitors must post their crew information in the 'ISORA Crew Manager App'.
- 3.7. The 'ISORA Crew manager App' must be used to declare the finish time and to make a declaration that the race has been completed correctly. Failure to comply will result in a 30% point reduction penalty for that race.
- 3.8. The Race Committee reserves the right to refuse any entry and/or to ask any boats to complete further undertaking or declarations before accepting their entry.

#### 4. Measurement

- 4.1. A valid and current IRC rating certificates must be presented on request to the Sailing Committee.

#### 5. Compliance with Class Rules; Certificates

- 5.1. The Race Committee may inspect or measure any boat or personal equipment, at any time.

#### 6. Changes in Sailing Instructions

- 6.1. Any change to the Supplemental Sailing Instructions or General Sailing Instructions will be posted on the ISORA webs Site by 18.30hrs on the day before it will take effect.

#### 7. Schedule of Races.

- 7.1. The race schedule is shown on the front page of this Supplemental Sailing Instructions.
- 7.2. There will be one start.
- 7.3. The type of racing will be a long Offshore Race.

## 8. Time of Start

- 8.1. The race start times will be as shown on the front page of this SSIs or as amended.
- 8.2. The start may be broadcast on VHF Channel 37
- 8.3. The race will be started by using RRS 26, with the warning signal being made 5 minutes before the starting signal.

## 9. Registration of Crew & Declaration to Race – ISORA Crew Manager App

- 9.1. Skippers must register the following details, for all crew members, on the 'ISORA Crewmanager App':
- 9.2. Crew Name and mobile phone number and date of birth if under 25.
- 9.3. Shore Contact Name and phone number for each crew member.
- 9.4. Once a boat have entered the race online, they must declare their intention to start or not on the 'ISORA Crewmanager App'.
- 9.5. The information will be used for safety purposes and in an instance of an emergency.

## 10. STARTING LINE

- 10.1. The start line is defined in the [LYC Midnight Race sailing instructions](#).
- 10.2. Prior to the start of each event boats are requested to obtain acknowledgement from the Event Committee.
- 10.3. The committee boat will maintain on the line for 10 minutes after the start. Boats starting after that time shall cross the start line as defined above.
- 10.4. Boats must pay particular attention to ferry movements into and out of Holyhead port.

## 11. THE COURSE

- 11.1. The course is defined in the [LYC Midnight Race sailing instructions](#).

Any amendments to the Course will be and published on the ISORA web site and may be communicated to all entrants by WhatsApp and email on the day before the start.

- 11.2. The course may be confirmed afloat to the competitors on VHF CH 37 before the start.

## 12. Waypoints

- 12.1. Waypoints may be used as marks. If so, Rule 28 will be amended accordingly in accordance with the RYA / RORC Guidance – "Racing Around Waypoints" See website for details.
- 12.2. Evidence of rounding the "virtual" mark must be taken and may be requested by the Race Officer. This evidence may include:
- 12.3. Photographic (iPhone or similar) evidence of the yacht's GPS showing its position at the mark.
- 12.4. Yacht's chart plotter track showing the yacht rounding the "virtual" mark. This must be transmittable to ISORA by email.
- 12.5. The onus of proof of having rounded the WAYPOINT mark will be with each yacht.

## 13. ISORA YB Tracker

- 13.1. All boats entered in the race will be fitted with the YB Tracker. The Skipper, accepting the units will be responsible for the replacement cost of the unit in a situation that the unit gets lost or damaged.
- 13.2. The units can be collected at Holyhead marina podium at 07:00 on Saturday or by prior agreement.
- 13.3. **In order to set up the units all boats who are entered must declare that they are racing by 12.00 on Wednesday prior to the race day. This declaration is a WhatsApp message on the "ISORA – UK – 2026" or "ISORA – Irish – 2026" group stating that "Boat name" will be racing on Saturday. This is critical for the efficient running of the tracking system.**
- 13.4. Trackers will only be issued to boats having a valid entry in the ISORA race.
- 13.5. The trackers must be returned to Peter Ryan in the NYC as soon as possible after the race or by special agreed arrangement.
- 13.6. The race progress can be tracked by following the YB Tracking app for iPhones and Android. On downloading the app, the "ISORA Series 2026".
- 13.7. Any queries relating to the Trackers should be dealt with by contacting Peter Ryan +353 87 2545037.

## 14. FINISH LINE

- 14.1. The finish line is defined in the [LYC Midnight Race sailing instructions](#).
- 14.2. The finish will be automatically recorded by the YB Tracker and the finish times will appear instantly on the app. There will be no Finisher on the line.



- 14.3. The finish time of the boat MUST be recorded and posted on the 'ISORA Crewmanager App'.
- 14.4. The above procedure is mandatory and deemed to be a "Declaration" that the yacht has completed the course in accordance with the sailing instructions.
- 14.5. There is no time limit for the ISORA event.
- 14.6. All boats approaching the finish line should monitor ferry movements into and out of Douglas. Reports received from the Douglas Port Authority about any boat interfering with a ferry, will result in the disqualification of that boat.

## 15. RETIREMENTS

- 15.1. Post the information on the 'ISORA Crewmanager App'.
- 15.2. Text ISORA on 00353 87 2545037.
- 15.3. For safety it is recommended to also inform the Coastguard by VHF.

## 16. Advertising

- 16.1. The event will be a Category C event.
- 16.2. All yachts may be presented with a sponsor's flag or decals, which must be displayed at all times (if provided).

## 17. Scoring System

- 17.1. Scoring will be in accordance with Appendix A of the Racing Rules of Sailing and for ISORA using the ISORA series scoring.
- 17.2. This race is weighted at 1.2 (see Section 16 Notice of Race & General Sailing Instructions)

## 18. Risk Statement

- 18.1. THE DECISION WITH REGARD TO STARTING AND CONTINUING A RACE LIES DEFINATIVELY WITH THE SKIPPER OF EACH BOAT AS HE / SHE ALONE IS AT ALL TIMES RESPONSIBLE FOR THE SAFETY OF HIS / HER OWN BOAT AND CREW
- 18.2. RRS Rule 4 of the Racing Rules of Sailing states: "The responsibility for a boat's decision to participate in a race or to continue racing is hers alone."
- 18.3. Sailing is by its nature an unpredictable sport and therefore inherently involves an element of risk. By taking part in the event, each competitor agrees and acknowledges that:
  - (a) They are aware of the inherent element of risk involved in the sport and accept responsibility for the exposure of themselves, their crew and their boat to such inherent risk whilst taking part in the event.
  - (b) They are responsible for the safety of themselves, their crew, their boat and their other property whether afloat or ashore.
  - (c) They accept responsibility for any injury, damage or loss to the extent caused by their own actions or omission.
  - (d) Their boat is in good order, equipped to sail in the event and they are fit to participate.
  - (e) The provision of a race management team, patrol boats and other officials and volunteers by the event organiser does not relieve them of their own responsibilities.
  - (f) The provision of patrol boat cover is limited to such assistance, particularly in extreme weather conditions, as can be practically provided in the circumstances.
  - (g) They are responsible for ensuring that their boat is equipped and seaworthy so as to be able to face extremes of weather; that there is crew sufficient in number, experience and fitness to withstand such weather; and that the safety equipment is properly maintained, stowed and in date and is familiar to the crew.
  - (h) Their boat is adequately insured, with cover of at least £3,000,000 against third party claims.

## 19. Safety

- 19.1. Competitors must adhere to the requirements of **Category 3 + Life Raft** of the WORLD SAILING OFFSHORE SPECIAL REGULATIONS 2026-2027 for this race. Details of these are on the ISORA website.

## 20. Personal Safety

- 20.1. RRS 1.2, 40 shall apply and it is the sole responsibility of the skipper to ensure that Life Jackets/Harness lines are carried for each member of the crew.

## 21. Pre-Race hosted at Liverpool

- 21.1. Catering may be available in LYC on Thursday evening.

## 22. Après Sail

- 22.1. If the race finishes at a "reasonable" time the Douglas Bay Yacht Club will be open for a post-race gathering.



**ISORA - Irish Sea Offshore Racing Association**

ISORA - Promoting the sport of Offshore Racing in the Irish Sea.



About **ISORA - Racing**

ISORA provides offshore racing in the Irish Sea and two separate Coastal Series - in Ireland and UK

OFFSHORE RACING      COASTAL RACES



Liverpool Yacht Club



With the assistance of the Douglas Bay Yacht Club.

**IoM Midnight Race**

Friday 5th June 2026, 15:00 BST

**TROPHIES will be awarded for the following:**

IRC Overall

IRC Class 1

IRC Class 2

YTC

Best LYC Yacht not winning another prize

**All times are BST**

## SAILING INSTRUCTIONS

1. This is open to any yacht helmed by a full member of LYC or an RYA affiliated sailing club.
  - a. Each boat shall carry her class numeral pennant on her backstay as shown on the list of entries.
  - b. Each yacht must also have paid the entry fee of £30 and have complied with the eligibility requirements as set out in the NOR.
  - c. Safety / crew sheet must have been sent to the Race Office before a yacht may start. Crew Safety Sheet: [Crew Safety Sheet Docx](#)
  - d. Entry Form can be found here: [IOM Midnight Race ENTRY FORM docx](#)
2. LYC General Conditions & Sailing instructions shall apply, except as amended below and rank as Sailing Instructions. These can be found at: <https://drive.google.com/file/d/1LfFuen7h2tR8Uoobq7yR2FoOAzHdKZo7/view> Owners and Crews are reminded that it is the sole responsibility of each boat to decide whether or not to start or continue to race.
3. The Race is designated Category '3' with RORC prescriptions plus Offshore Special Regulations life raft, see:- <https://d7qh6ksdplczd.cloudfront.net/sailing/wp-content/uploads/2022/02/16130828/OSR-Monohull-Category-3-Liferaft-Extract-22v2.pdf>

#### 4.1 Eligible Classes:-

- **IRC 1 TCF** 0.935 and higher (Class 1)

- **IRC 2 TCF** less than 0.935 (Class 2)

LYC reserve the right to change the split between IRC Class 1 and 2 after reviewing the race entries. If there are less than 3 starters in an IRC class, then the IRC classes may be consolidated.

*Competitors must have a **current valid** IRC certificate for the vessel and if not an LYC boat that has already provided this certificate, it must be provided to the Race Captain before the start by email [racing@lyc.org.uk](mailto:racing@lyc.org.uk)*

- YTC (Class 3)

Non-LYC member competitors must provide their current valid YTC rating certificate. Boats can only enter the YTC Class if they do not have a current valid IRC certificate.

#### 4.2 Spinnakers:

IRC Rule 11.2 will apply and IRC Rule 21.6.1 is varied to the extent that a boat may carry one more spinnaker than shown on her current IRC Certificate of area not greater than rated SPA without an increase in rating.

5. The starting times are BST (RRS 26 is amended)

6. The **STARTING LINE** is a line from the flagstaff of the Liverpool Yacht Club Start Line a transit on an orange triangle on the railings and a diamond on the lockhouse mast. A LYC burgee may be flown.

Alternatively, an anchored yacht may be placed as an outer limit. If a yacht is used, the line will be from the lockhouse mast to the yacht's mast. The Race Officer will announce when the yacht is on station.

a. Class 1 & 2 (IRC) Class 3 (YTC) Warning 14:55, Preparatory 14:56, One Minute 14:59, and Start 15:00.

b. Each boat shall carry her class numeral pennant on her backstay as shown on the list of entries.

7. Individual recalls will be signalled by VHF. If we are able to provide flags on the start line, recalls will be signalled by Flag 'X' or a board painted as Flag 'X'.

8. General recalls will be signalled by VHF and/or "First Substitute" pennant as RRS 29.2.

9. Sound signals will be by VHF and maybe by horn.

10. **Communications** at the start will be by VHF Ch. 37a/M1

11. **Identity Gate.** Before the race, when locking out at Liverpool, each boat must show:- life raft, ISAF OSR Cat 3 Flare Pack or equivalent. (All flares shall be in good condition and within expiry date) and sufficient Lifejackets, Safety Harness and tethers for ALL on board compliant with ISF OSR Category 3.

12. **The course** is as follows: Start, **Dukes** (off the Albert Dock) to **port**, Liverpool Channel course via Crosby & Queen's channels, **Q2** to **starboard**, then to Douglas leaving No1 Buoy to port. Distance is about 70 nautical miles.

- a. All channel buoys except Dukes south of Brazil / C22 plus Crosby and Formby Floats are not marks of the course.
- b. All other channel marks, i.e. the Crosby and Queens Channel marks (lateral and cardinal), to a line between and including Q1 & Q2 ARE marks of the course and shall be left to the appropriate side.
- c. Competitor's attention is drawn to the various exclusion and prohibitions zones around oil / gas facilities and or windfarms under construction. Oils & Gas facilities will be clearly marked on up-to-date charts, construction exclusion zones may be on charts or denoted under Peel Ports 'Notice to mariners' on the Peel Ports website. See:  
<http://peelports.com/ports/liverpool/port-information>

### 13. FINISHING LINE

- a. Leaving channel mark No 1 to Port, the finishing line shall be an extension of the line from the light at end of Victoria Pier through the No 3 Starboard Buoy towards Onchan Head.(see chartlet).
- b. You will take your own BST finish times using the GPS signal as detailed in part 14 of these sailing instructions.

### 14. Finish time

The finishing time will be by self-declaration and must be carefully recorded and witnessed on the Declaration Form (see below). After finishing, TEXT your Yacht Name and Finish Time to +447770440331. Should you be unable to send a text, an email may be sent to racing@lyc.org.uk giving boat name, and finishing time. Transmit your message/finish time even if there is apparently no reply.

15. **TIME LIMIT.** RRS 35 shall not apply. The time limit for all boats shall be midnight on Saturday 21st June 2025 (00:00:00 BST 22nd June 2025).

16. **Declaration form**

The enclosed declaration form must be handed to the LYC Race Officer in Douglas, in the event of retirement it may be emailed or posted to the Racing Captain immediately on return to a UK port. Provisional results will be posted in the Douglas Bay Sailing Club and on the LYC Website as soon as practicable after the prize giving.

## **17.Dangers**

- a. It is not recommended to sail outside of the line of the channel buoys in the vicinity of the revetment wall.
- b. A listening watch on VHF (Ch 12) is **required** when in the channels within the area defined on the charts as 'Limit of the port of Liverpool'.
- c. Gas/Oil Fields have areas prohibited to navigation and unlit buoys can be
- d. present in the area.
- e. An up to date chart and sight of current Liverpool Notice to Mariners is
- f. recommended.
- g. Competitors must abide by the IRPCS rules and illuminate navigation lights outside of daylight hours. If competitors are unable to comply then they **MUST** retire.
- h. In the event a vessel is forced to navigate outside the channel and miss a
- i. channel mark due to adverse current or oncoming commercial vessels that mark may be omitted providing the competitor receives no significant competitive advantage and they must re-join the channel as soon as the hazard is cleared. Competitors **MUST** take every opportunity comply with the course. If competitors are forced to pass a mark on the incorrect side this should be identified on the declaration form, as so if the engine is used to avoid a collision or hazardous situation during the race in the comments section of the declaration form. Failure to do so may lead to disqualification or other penalty post-race.
- j. In any event the race committee may decide to apply a penalty if it is deemed that an advantage was gained. Starting an engine to recharge batteries and keeping the engine in neutral does not require identifying on the declaration.

## **18.Mutual Support**

- a. Competitors are strongly encouraged to keep an eye out for other competitors who may be having difficulties and to provide mutual support in the event of an emergency; to this end, all competitors **MUST** actively monitor CH16 & CH12 to facilitate easy contact and avoid unnecessary action.
- b. A competitor who suspends racing to investigate another competitor for whom they have genuine concern may apply for redress.

## **19.Risk Statement**

RRS 3 states: *'The responsibility for a boat's decision to participate in a race or to continue to race is hers alone.'*

Sailing is by its nature an unpredictable sport and therefore inherently involves an element of risk. By taking part in the event, each competitor agrees and acknowledges that:

- (a) They are aware of the inherent element of risk involved in the sport and accept responsibility for the exposure of themselves, their crew and their boat to such inherent risk whilst taking part in the event;
- (b) They are responsible for the safety of themselves, their crew, their boat and their other property whether afloat or ashore;
- (c) They accept responsibility for any injury, damage or loss to the extent caused by their own actions or omissions;
- (d) Their boat is in good order, equipped to sail in the event and they are fit to participate;
- (e) The provision of a race management team, patrol boats and other officials and volunteers by the event organizer does not relieve them of their own responsibilities;
- (f) The provision of patrol boat cover is limited to such assistance, particularly in extreme weather conditions, as can be practically provided in the circumstances;
- (g) It is their responsibility to familiarise themselves with any risks specific to this venue or this event drawn to their attention in any rules and information produced for the venue or event and to attend any safety briefing held for the event;
- (h) They are responsible for ensuring that their boat is equipped and seaworthy so as to be able to face extremes of weather; that there is a crew sufficient in number, experience and fitness to withstand such weather; and that the safety equipment is properly maintained, stowed and in date and is familiar to the crew.

**20. Protests** shall follow the format of RRS Part 5. And must be identified to Race Control at the earliest opportunity, and no later than 24 hours after the last vessel finishes.

21. Failure to start must be reported or retirement whilst in the River Mersey must be reported by VHF Ch. 37a/M1. Later retirements should be reported to [racing@lyc.org.uk](mailto:racing@lyc.org.uk) or text to +447770440331 as soon as is reasonably possible after retirement.

22. Retiring boats should state their intentions. Failure to report your retirement may lead to an unnecessary call to the SAR services. Reason for retirement must be indicated on your declaration form.

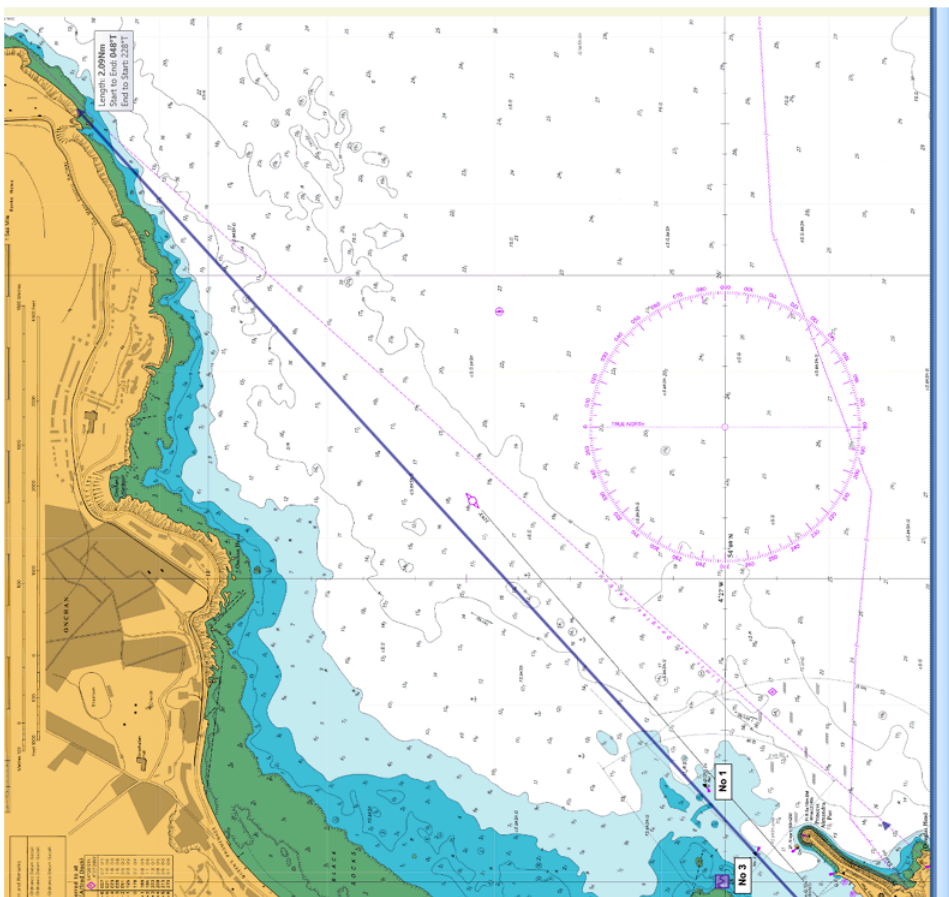
LYC.

## NOTES FOR COMPETITORS

1. REMEMBER to leave your Crew list with the person designated on your entry form and ensure that they are fully briefed as to telephone numbers available at both UK and foreign destinations.
2. The Deputy Harbour Master, Mersey VTS wishes to remind all Competitors to be aware of the fact that vessels using the main shipping channels in the Mersey River area will inevitably be constrained by their draught and should accordingly be given a wide berth.
3. We intend for the results to be given at the Douglas Bay Yacht Club at 19:00 on Saturday 6th June 2026. Confirmation of social arrangements will be confirmed by LYC ahead of the race start.
4. BOATS may be subject to Safety Inspection at Douglas and LYC members may be asked to do this on their own and other yachts. Everyone is asked to co-operate with this vital safety measure.

HW Liverpool (Gladstone) Friday 5<sup>th</sup> June 15:03 BST ~ 7.7m  
Sunset Liverpool 5th June ~ 21:34  
Sunrise Douglas 6th June ~ 04:45

Addendum 1: Finish line:



Addendum 2:

**Race Declaration**

Yacht Name:

Owner's Name:

Race Date:

Race Start Time:

**I declare that I was on board and in charge of the above yacht during the LYC Race just completed and that during that time the Sailing Instructions were obeyed and that our time of arrival was as stated below.**

Finishing Time:

Date:

Yacht Ahead:

Yacht Astern:

Remarks (use of engine, omission of mark)

Skipper's  
Signature:

Print Name:

No. of persons on board:

Witness  
Signature:

Position in Crew:

Please complete this form and either hand it in to race control or email within forty-eight hours of the last yacht to finish to: [raceoffice@lyc.org.uk](mailto:raceoffice@lyc.org.uk)

Alistair Roaf  
Sailing Captain, LYC  
+447770440331